



# Junior year Loading...

Dr. Ralita Cheeks, Ed.D

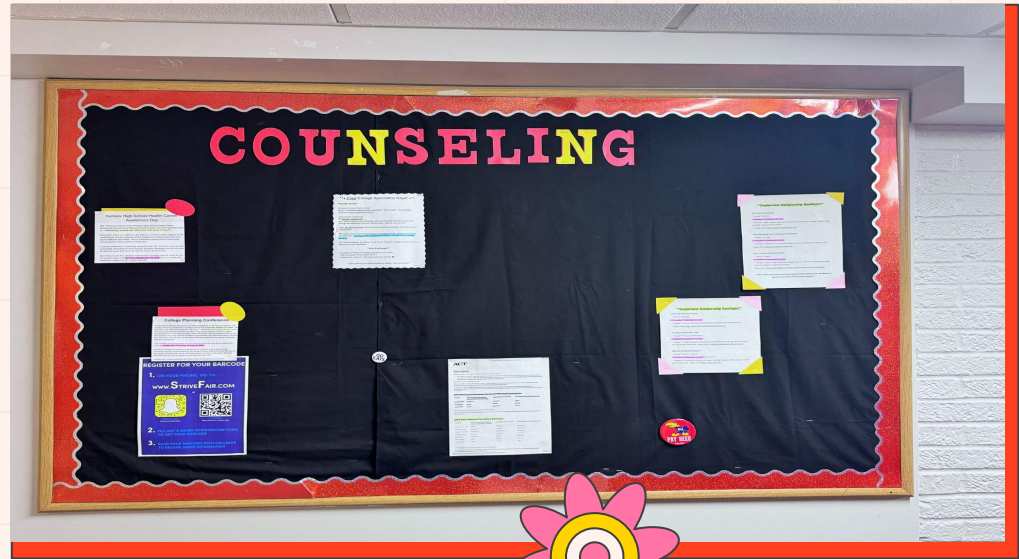


“Education is the passport to the future, for tomorrow belongs to those who prepare for it today.”

—Malcolm X



# Check Out The Counseling Wall

Make a habit to visit!



# Are You Reading Emails From Me?

**It's easy not to read an email but does it benefit you?**

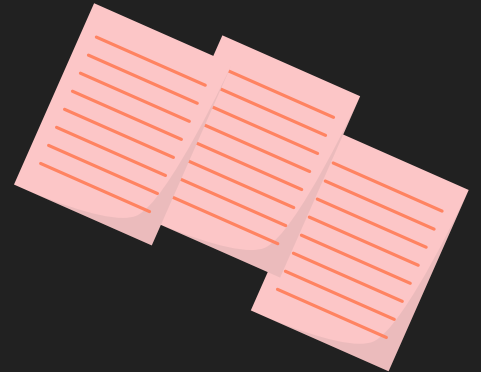
- Emails from me are filled with opportunities for you.
- If I take time to email you it is because I want you to get important information
- Emails are the fastest way for me to communicate with you.



Google Classroom

**Class of 2027**  
**Google**  
**Classroom**

Class code:  
q52f7ov



# Don't Forget to Check the Ell-Saline Website On a regular basis!!!

This is where Dr. Cheeks communicates best with parents, teachers and students.

The image shows a screenshot of the Ell-Saline website's navigation menu. The top navigation bar includes links for News, Admin, Content, Help Center, and Test Accessibility. Below this is a secondary navigation bar with links for District Office, Elementary, MS/HS, Parents, Crisis Help Center, Resources, Calendar, Contact Us, Staff Directory, and Archives. The MS/HS dropdown menu is open, showing options for MS/HS Staff, Contact Information, Booster Club, Resources, Athletics, News, Counselor, Organizations, and Library. The Counselor dropdown menu is also open, showing options for 7th Grade, 8th Grade, Freshman, Sophomores, Juniors, and Seniors. The Freshman option is highlighted in red. A white arrow points to the Counselor link, and another white arrow points to the Freshman link. The breadcrumb trail shows the path: Home / MS/HS / Counselor / Freshman. The page content area features a large 'MS/HS' logo and a grid of links including HS Course Catalog, Individual Plan of Study (IPS), Graduation Requirements, Volunteer Opportunities, and College Planning Time Line.

! News Admin Content Help Center Test Accessibility

Home District Office Elementary MS/HS Parents Crisis Help Center Resources Calendar Contact Us Staff Directory Archives

News Athletics Staff Quicklinks

MS/HS

MS/HS Staff  
Contact Information  
Booster Club  
Resources  
Athletics  
News  
Counselor  
Organizations  
Library

7th Grade  
8th Grade  
Freshman  
Sophomores  
Juniors  
Seniors

Home / MS/HS / Counselor / Freshman

HS Course Catalog  
Individual Plan of Study (IPS)  
Graduation Requirements  
Volunteer Opportunities  
College Planning Time Line

Don't Forget to Check the Ell-Saline Website On a regular basis!!!

This is where Dr. Cheeks communicates best with parents, teachers and students.

## Headlines

---

Dual Credit Scholarship

---

Pre-Enrollment Form 11th Grade  
Going to 12th Grade

---

AIM (Aviation, Innovation, and  
Maintenance) Program

---

Federal Bureau of Investigation  
(FBI) Kansas City Teen Academy

---

Salina Area Tech College (SATC)  
Enrollment

---

HS Course Catalog

---

ACT WorkKeys

---

Kansas Boys State: Leadership

---

ACT/SAT Test Prep- Methodize

---

College Planning Time Line

---

Concurrent Credit & Dual Credit  
Information

---

Dual Credit

---

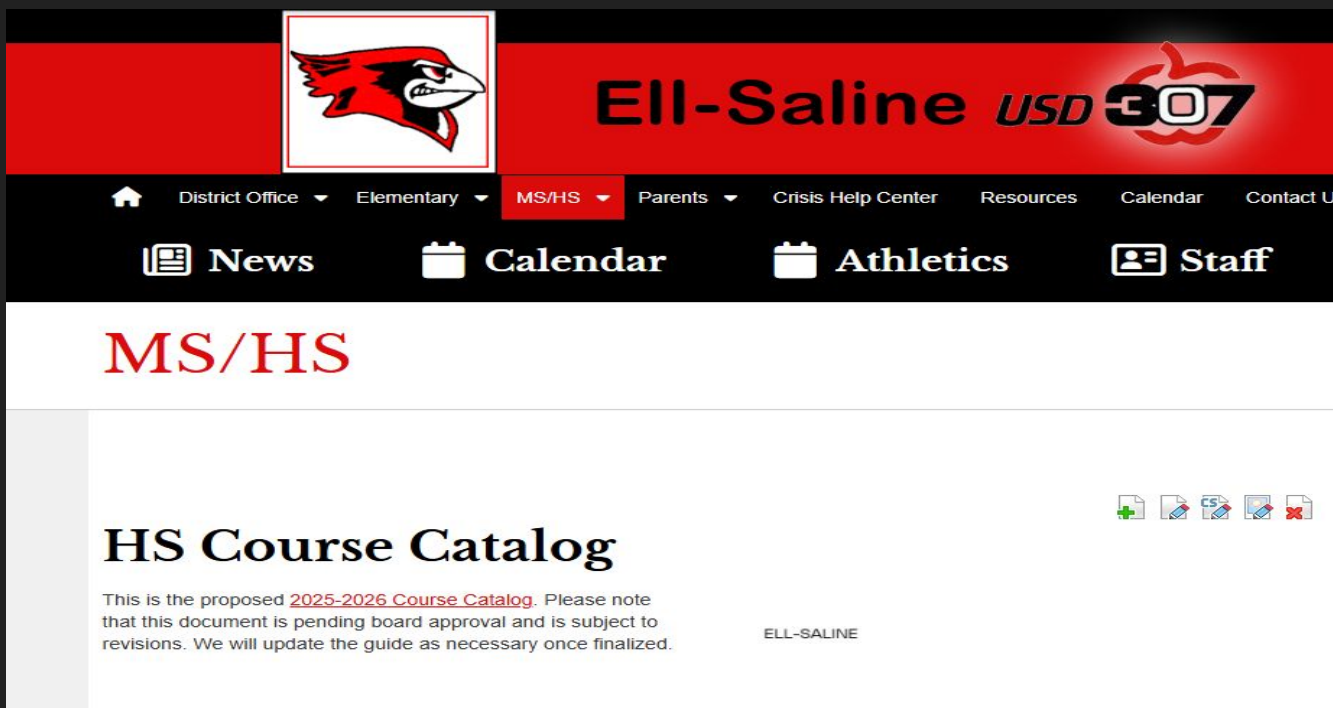
Job Shadowing

---

Scholarships

Don't Forget to Check the Ell-Saline Website On a regular basis!!!

This is where Dr. Cheeks communicates best with parents, teachers and students.



The screenshot shows the Ell-Saline USD 307 website. At the top, there is a red header with the school's logo (a red and black bird) and the text "Ell-Saline USD 307". Below the header is a navigation bar with links for District Office, Elementary, MS/HS (highlighted), Parents, Crisis Help Center, Resources, Calendar, and Contact Us. Below the navigation bar are icons for News, Calendar, Athletics, and Staff. The main content area is titled "MS/HS" in red. Below this, there is a section titled "HS Course Catalog" with a subtext: "This is the proposed 2025-2026 Course Catalog. Please note that this document is pending board approval and is subject to revisions. We will update the guide as necessary once finalized." To the right of the subtext are five small icons: a green plus sign, a blue document icon, a blue document icon with a red 'X', a blue document icon with a red 'X', and a red 'X' icon. The text "ELL-SALINE" is visible at the bottom right of the page.



# Requesting A Transcript

Go to the Counselor's Corner...

## Headlines

---

[HS Course Catalog](#)

---

[MS Course Catalog](#)

---

[Xello- Explore Your Future with Xello](#)

---

[Transcript Request for College Admissions](#)

---

[Understanding Cyberbullying: A Guide for Parents](#)

---

[2028 Graduation Requirements](#)

---

[Individual Plan of Study \(IPS\)](#)

---

[ACT vs SAT](#)

---

[Volunteer Opportunities](#)

---

[2024-2025 Financial Aid Checklist](#)

# Why is Junior year Important?

Your junior year marks the halfway point of your high school journey!

This is an important year to focus and get serious about **post high school planning**, whether that means college( 2- year, 4 year or technical), **joining the military** or entering the **workforce**. Now is the time to think about your future, **visit colleges**, find out your skills and interests, get an **internship**, or **volunteer**.

# What Should I be Doing?

- Explore career interests
- Step out of your comfort zone
- Maintain Good Grades
- Begin building your resume and continue to volunteer hours in Xello
- Discuss college and career options with your family/counselor



Have fun!

# Junior Year!!!



## Tips and Reminders!

### Focus on your grades

Maintain strong grades, as this is the final full academic year that colleges, the military, and scholarship committees will typically review before making their decisions.

### Seek out leadership opportunities

A great way to give yourself a competitive edge is through your involvement in extracurricular activities. Strive to take on leadership roles and responsibilities.

### Stay organized

Use your cell phone calendar or invest in a planner. Keep track of all tests, assignments, and the due dates.

### Get involved in extracurricular activities

There's no one-size-fits-all way for you to be engaged in school or in the community. Clubs, sports, and volunteering are all great ways to be involved.

### Balance your academics and social life

Make meaningful and productive plans for the summer, as it may be the last full summer spent with childhood friends and family...so make the most of it! Have fun, but also take time to create a senior year checklist. This will help you transition smoothly into your final year, ensuring you are well-prepared.



By the way.....Are you on track to graduate?



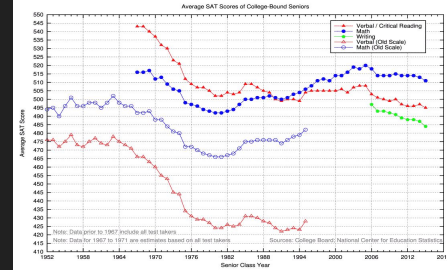
SAT

*vs.*

ACT

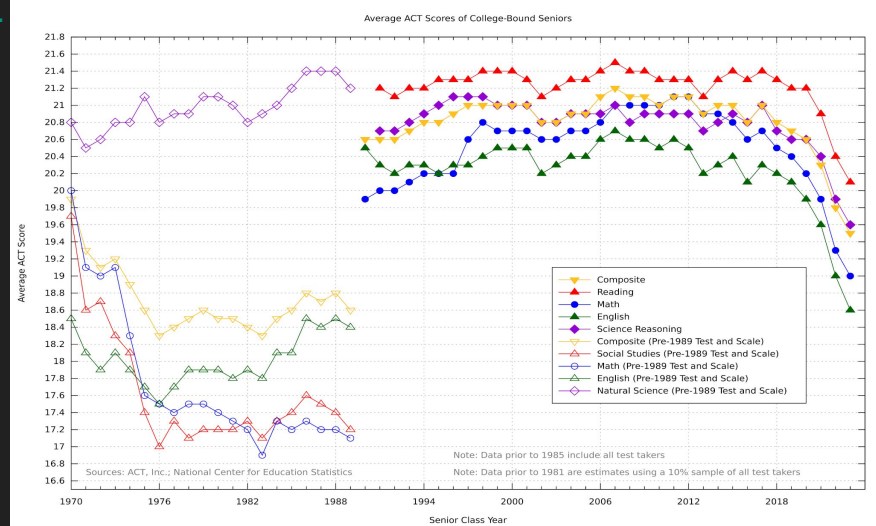
WHAT'S THE DIFFERENCE?

# ACT vs SAT: How Different Are They?



Because all US colleges and universities accept scores from either the ACT or SAT, there's no advantage in taking one test over the other. This means you can apply to the same schools, regardless of which test you decide to take.

At a glance, the two tests aren't that different. Both the ACT and SAT are nationally recognized standardized tests and common admission requirements for US schools. Catering primarily to high school juniors and seniors, each test measures students' proficiency in various critical skill areas—such as problem solving and reading comprehension—that are necessary for college success.



# ACT vs SAT: How Different Are They?

	ACT	SAT
<b>Total Time</b>	2 hrs 55 mins without Writing 3 hrs 35 mins with Writing	2 hrs 14 minutes total
<b>Order of Sections</b>	1. English 2. Math 3. Reading 4. Science 5. Writing (optional)	1. Reading and Writing (Module 1 and 2) 2. Math (Module 1 and 2)
<b>Time Per Section</b>	<b>English:</b> 45 mins <b>Math:</b> 60 mins <b>Reading:</b> 35 mins <b>Science:</b> 35 mins <b>Writing (optional):</b> 40 mins	Reading and Writing: 64 mins (two 32-min modules)  Math: 70 mins (two 35-min modules)
<b># of Questions</b>	English: 75 questions Math: 60 questions Reading: 40 questions Science: 40 questions Writing (optional): 1 essay	Reading and Writing: 54 questions Math: 44 questions



# ACT vs SAT: How Different Are They?

	ACT	SAT
<b>Scoring</b>	<p><u>Total score range:</u> 1-36 Each section uses a scale of 1-36. Your total score is the average of your four section scores.</p> <p>The optional Writing section uses <u>a scale of 2-12</u> and does not count toward your final score.</p>	<p><u>Total score range:</u> 400-1600 The Reading and Writing and Math sections each use a scale of 200-800 and are combined for a total score.</p>
<b>Cost</b>	<p><u>\$63 without Writing</u> <u>\$88 with Writing</u></p>	<p><u>\$60</u></p>
<b>Who Accepts Scores?</b>	<p><u>Accepted by all colleges and universities in the US</u></p>	<p>Accepted by all colleges and universities in the US</p>



# National Test Date Schedule

Test Date	Regular Registration Deadline Late Fee Applies After This Date	Late Registration Deadline	Photo Upload and Standby Deadline
<del>February 8, 2025</del>	<del>January 3</del>	<del>January 24</del>	<del>January 31</del>
April 5, 2025	February 28	March 16	March 28
June 14, 2025	May 9	May 26	June 6
July 12, 2025	June 6	June 20	July 4



Let's talk about transcripts!

**High School Transcript**  
Name: Jane Smith    Gender: F    Birthdate: Ja

Academic Achievements		
	Grade	Credits
<b>Freshman Year:</b>		
English I	95	1.00
Geometry	92	1.00
Physical Science	98	1.00
World Geography	92	1.00
Latin I	100	1.00
New Testament	98	1.00
Art	95	.50
Health/PE	100	.50
<b>Junior Year:</b>		
English III		
Trigonometry		
Chemistry		
American History		
Latin III		
World Religion		
Sailing		
Chor		
<b>Senior Year:</b>		



# Your Transcript Probably Looks Something Like...



**ELL-SALINE MIDDLE/HIGH SCHOOL - OFFICIAL TRANSCRIPT**

STUDENT NAME: [REDACTED] 414 E. Anderson  
 Brookville, KS 67425  
 GRADE: 10 785-914-5600 phone  
 785-225-6694 fax

STUDENT [REDACTED] BIRTHDATE [REDACTED]

	SEMESTER 1	SEMESTER 2	SEMESTER 1	SEMESTER 2
24-25				
Advanced P.E. S1	A 0.500			
Art II S1	A 0.500			
Biology - Pathway	B 0.500			
English II S1	B 0.500			
Geometry S1	A 0.500			
Nutrition and Wellness	A 0.500			
World History S1	A 0.500			
23-24				
Algebra I S1	A 0.500			
Algebra I S2		A 0.500		
Art I S1	A 0.500			
Art I S2		A 0.500		
Computer Applications I (HS)	A 0.500			
Earth/Space Science S1	A 0.500			
Earth/Space Science S2		A 0.500		
English I S1	B 0.500			
English I S2		A 0.500		
P.E./Health S1	A 0.500			
P.E./Health S2		A 0.500		
Spanish I S1	A 0.500			
Spanish I S2		A 0.500		
Speech		A 0.500		

A = 4.00  
 B = 3.00  
 C = 2.00  
 D = 1.00  
 F = 0  
 P = Passing  
 NJC = No Credit  
 GRADING SCALE  
 A=90-100  
 B=80-89  
 C=70-79  
 D=60-69  
 F=0-59

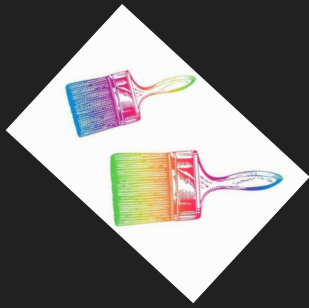
ACT - Composite  
 ACT - Date

Total Units Earned: 10.500  
 Cumulative GPA: 3.8371  
 Rank: [REDACTED]  
 Graduated Date: [REDACTED]

SIGNATURE \_\_\_\_\_ DATE \_\_\_\_\_



# Pre-Enrollment Form



## Junior Year Enrollment Form

Student Name: \_\_\_\_\_ Pathway/Career Interest: \_\_\_\_\_

Kansas Scholar  Eli Saline

**Kansas Scholar-** Students are required to complete two years of the same foreign language, four years of math, and four years of science, including biology, chemistry, and physics. Completing this curriculum may make students eligible for certain state scholarships.

**Eli Saline-** Students are required to complete three years of math, and three years of science which can include agriculture sciences. Completing this curriculum will make students eligible for certain scholarships, but not Kansas Scholar Scholarships.

IEP  504 Plan  ESL  Gifted

**Postsecondary Plan (circle one):**

4-year College/University   2-year College/University   Tech/Voc School   Military   Workforce

### Requires Courses

1. **English:** English 3

2. **Math:** Algebra 2

3. **Science:**

4. **Social Studies:** American History

### Elective Courses

1.

4.

2.

5.

3.

6.

If you are requesting a course that requires teacher approval (ex. Digital Media Imaging), please list them below. Do **NOT** list the courses you need approval for above.

### Classes Requiring Teacher Approval/Audition/Application

1.

Teacher Signature: \_\_\_\_\_

**Alternates:** List some semester and year-long courses you would be willing to take in the event your first choices do not work out. List them in order of preference.

### Alternates

List some semester and year-long courses you would be willing to take in the event your first choices do not work out. List them in order of preference.

1. \_\_\_\_\_ 2. \_\_\_\_\_ 3. \_\_\_\_\_

Student Signature: \_\_\_\_\_

Parent Signature: \_\_\_\_\_

*If you COMMIT to a course and you are CAPABLE, you will be expected to COMPLETE the course.*



# Dual Credit

SATC courses (online or on campus sites) taken by high school students.




# Dual Tech Programs

SATC programs such as, but not limited to, Auto Technology or Business Technology -

# Concurrent

Courses taken at the high school of which are instructed by a high school teacher.



# Go To Salina Area Tech

→ **Apply Now!**    ✉ E-Mail    ● Canvas    👤 Sonis    👤 Testing Services    📅 Academic Calendar    🔍 Class Schedules    📁 Faculty/Staff Directory    💳 Make a Payment

🌐 En Español    ☰ More



**About Us**

**Admissions**

**Programs**

**Students**

**Human Resources**

**Giving**



This content is password protected. To view it please enter your password below:

Password:

ENTER

<https://salinatech.edu/admissions/>



2562 Centennial Road  
Salina, KS 67401

P: 785-309-3100

F: 785-309-3101

#### QUICK LINKS

SONIS

Canvas

Transcript Request

Make a Payment

#### RESOURCES

Apply Now

Financial Aid

Request Information

Scholarships

Testing Services

Click Below or Check out the back of the Ell-Saline course catalog for college opportunities!

K-State

SATC

# 11<sup>TH</sup> GRADE COLLEGE PLANNING TIMELINE



## EVALUATE YOUR EDUCATION OPTIONS AND MAKE A LIST

Now is the time to follow a more specific path. Your list of colleges and programs should include schools that meet your most important criteria (for examples: size, location, cost, academic majors, or special programs). Go to college fairs, attend college nights, and speak with representatives who visit your high school.



## TAKE THE PSAT®

Taking the test qualifies you for the National Merit Scholarship program, which means you could earn money for college. In addition, it's a good way to practice for the SAT.



FALL



## ORGANIZE A TESTING AND PREP PLAN

Figure out when you'll be taking important tests like the SAT®, ACT®, SAT® Subject Tests, and AP® exams, and mark the dates on your calendar. If you qualify for special testing accommodations because of a learning disability, you may need to register for tests early to ensure you get the support you need. Create your own study plan, or lean on a prep resource like Peterson's.



## STAY ON TRACK WITH YOUR CLASSES AND GRADES

We've said it before and we'll say it again. Keep your grades up! Even if your grades haven't been that good so far, it's never too late to improve. Colleges like to see an upward trend. Talk to your guidance counselor to ensure that you have the credits you need to graduate and remain a competitive applicant.

WINTER



## STAY INVOLVED WITH EXTRACURRICULAR ACTIVITIES

Colleges look for consistency and depth in the non-academic activities you pursue. Taking on leadership roles and making a commitment to the same groups are more important than trying out tons of new activities each year. Remember to have fun!



## CONTACT YOUR RECOMMENDATION WRITERS

Consider whom you want to ask to write your recommendations now and let them know so they'll have time to prepare before getting tons of requests in the fall. Ask teachers who know you well and who will have positive things to say. Letters of recommendation from a coach or activity leader are also valuable.



## START WORKING ON YOUR APPLICATION ESSAYS

Compose rough drafts of the essays you'll need for your college applications. Have a teacher read and discuss them with you so you can make improvements. Make any revisions to your application essays and prepare final drafts. Don't forget to proofread your final essays a few times.



## ORGANIZE YOUR FINANCIAL AID INFORMATION

Develop a plan that includes a list of the aid sources, requirements for each application, and a timetable for meeting the filing deadlines. Getting organized will make the process of applying a lot easier.



## VISIT COLLEGES

Visit the campuses of your top college choices. Take a tour and speak with the admissions and financial aid staff. If you have friends or relatives in college, talk to them about what college life is like. Although it's important to hear what the admissions staff has to say about a school, it's also important to get the students' perspective.

SUMMER



## APPLY FOR A SUMMER JOB OR INTERNSHIP

Summer employment and internships in fields you're interested in will look appealing on a college application or resume. The money you earn can also be used to help pay application and testing fees in the fall.



For more information visit [www.Petersons.com](http://www.Petersons.com)



Next year will be what you  
make it!!!

Dr. Ralita Cheeks

So what will you make it?